

And generate unlimited variations

Using Adobe Firefly Generative Fill

To change parts of an image

Adobe Firefly



@ZoheMustafa

Here to help you adopt AI

Swipe >

Subtract

54

Select background

Invert selection

Reset


Share

1


Choose an image



 Add

 Subtract

64 

 Select background

 Invert selection


 Reset

2

Select parts of the image you want to change

Use a largish brush size

Don't be afraid go over all parts of the area you want to change



The screenshot shows the Adobe Firefly web interface. A woman is standing in a studio setting with blue and pink paper fans in the background. Her white long-sleeved shirt is highlighted with a black and white checkerboard selection pattern. The Adobe Firefly logo is visible in the bottom left corner of the image area.

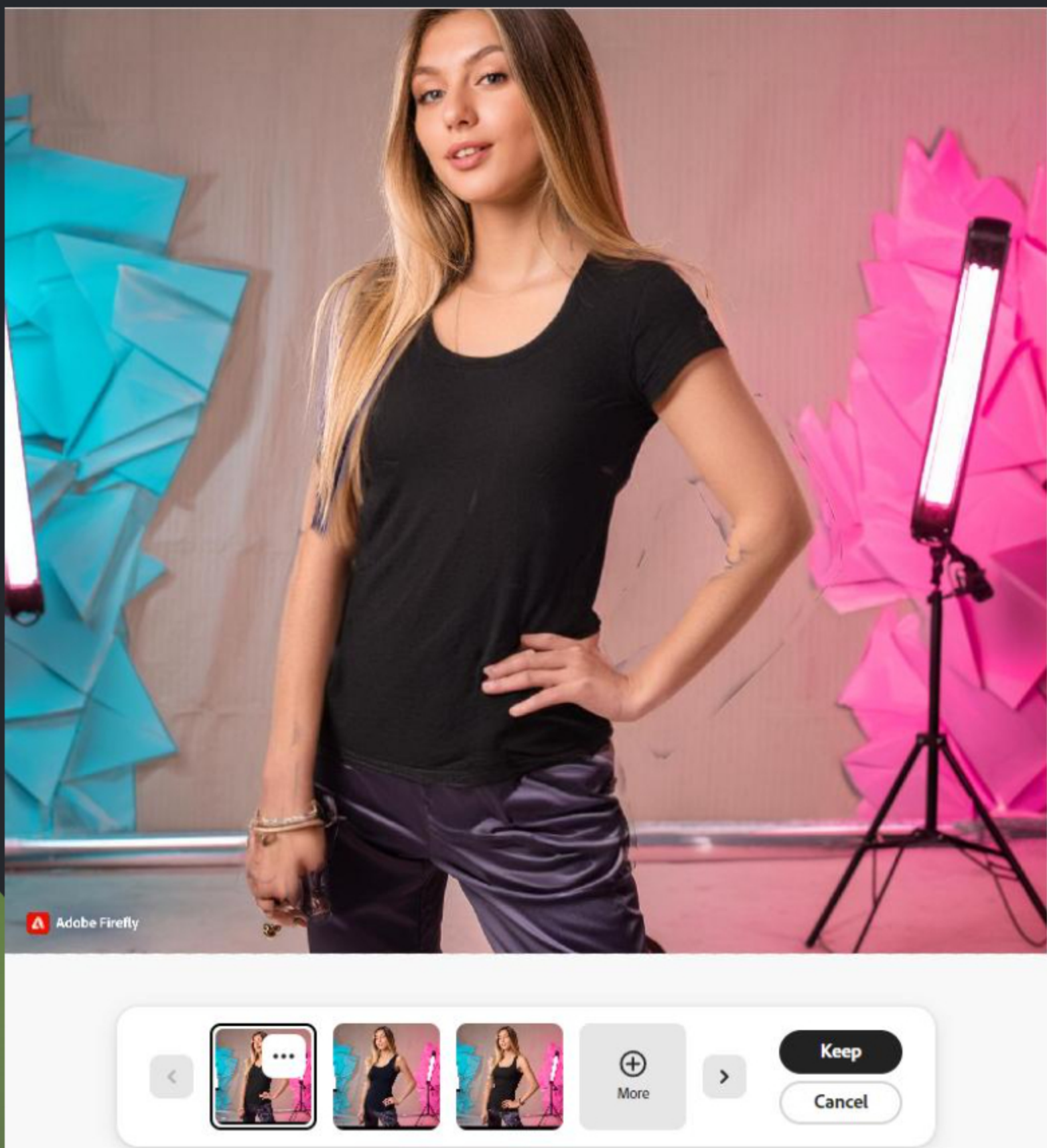
Prompt
black tshirt

[Add](#) [Subtract](#) 54 [Select background](#) [Invert selection](#) [Reset](#) [Generate](#)

3

Type your prompt

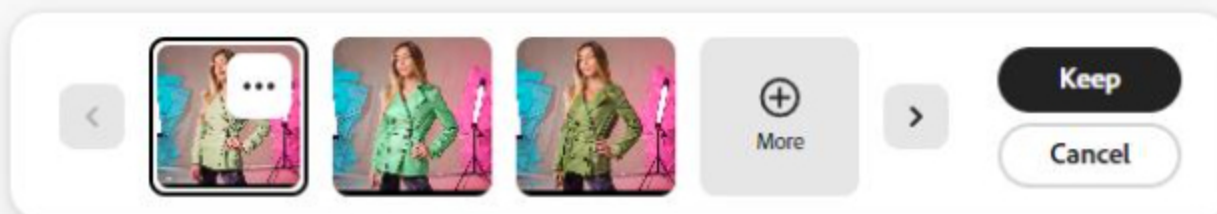
In this case it was just "black tshirt"
You can choose to keep or click more



4

Rinse Repeat

With different prompts
Its that easy!



Thanks for reading

Have you tried Adobe Firefly's Generative Fill?

This will work for any picture.
Doesn't have to be for Fashion.

Follow me for more guides and tips



@ZoheMustafa

Here to help you adopt AI

